



STANDARD ACCESSORIES

1. RADIATORS (FLEXOPLATE) (AS REQUIRED) 300 KVA AND LARGER
2. WELDED ON COVER
3. BOLTED ON INSPECTION PLATE
4. THREE EACH COVERMOUNTED HIGH VOLTAGE BUSHINGS WITH MECHANICAL EYEBOLT CONNECTORS
5. THREE EACH LOW VOLTAGE BUSHINGS WITH 4 OR 6 HOLE SPADE TERMINALS. ONE EACH LOW VOLTAGE NEUTRAL BUSHING WITH 4 OR 6 HOLE SPADE TERMINAL AND DETACHABLE GROUND STRAP
6. LIFTING HOOKS (4 REQUIRED)
7. AUTOMATIC PRESSURE RELIEF VALVE
8. ONE INCH UPPER FILTER PRESS CONNECTION AND FILLER PLUG
9. PRESSURE – VACUUM GAUGE
10. LIQUID LEVEL GAUGE - MAGNETIC
11. DIAL TYPE THERMOMETER
12. EXTERNAL TAPCHANGER HANDLE (WITH PROVISIONS FOR PADLOCKING)
13. DIAGRAMMATIC CORROSION RESISTANT NAMEPLATE
14. TWO EACH TANK GROUND PADS, ONE ON BACK SIDE OF TANK
15. ONE INCH DRAIN VALVE AND FILTER PRESS CONNECTION
16. TRANSFORMER BASE WITH PROVISIONS FOR ROLLING
17. PER ASTM D-3487 TYPE II MINERAL OIL FILLED WITH LESS THAN 1 P.P.M. OF P.C.B. AT TIME OF MANUFACTURE
18. PROVISION FOR JACKING 1½" MIN., 3½" MAX.
19. PAINT COLOR ANSI – 61 GREY

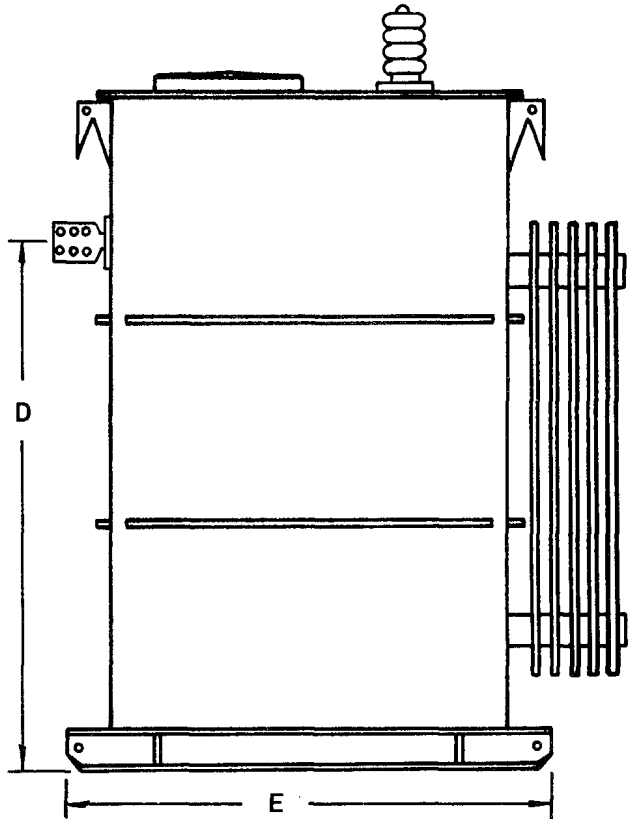
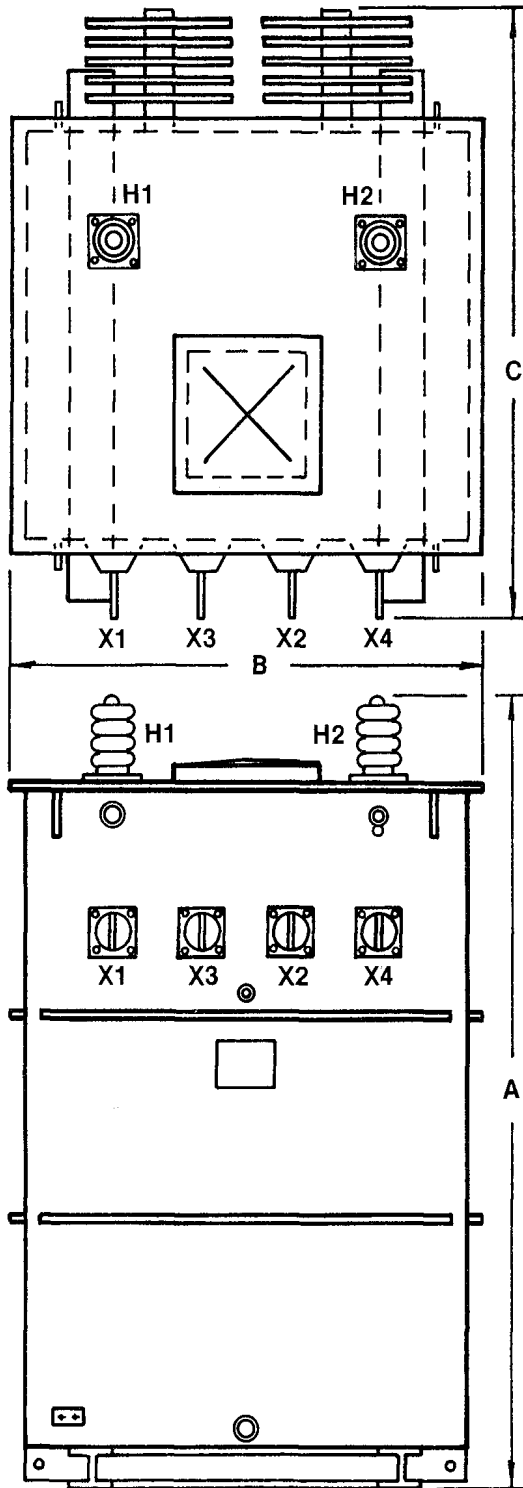
TRANSFORMER TESTS PER ANSI C57.12.90

TRANSFORMERS CONFORM TO NEMA & ANSI STANDARDS WHERE APPLICABLE

TRANSFORMERS SUPPLIED WITH STANDARD DISTRIBUTION ACCESSORIES PER ANSI C57.12.  
REFER TO FACTORY FOR SPECIAL FEATURES.







**WEIGHTS & DIMENSIONS**

<u>KVA</u>	<u>T.W.</u>	<u>A</u>	<u>B</u>	<u>C</u>	<u>D</u>	<u>E</u>
500	3500	64	34	54	42	36
667	5600	76	42	62	52	56
750	6500	76	42	66	52	56
833	7500	76	42	70	52	56
1250	8800	76	42	74	52	56
1500	10000	92	44	77	64	61
1667	12000	92	44	84	64	61

TRANSFORMERS SUPPLIED WITH STANDARD DISTRIBUTION ACCESSORIES PER ANSI C57.12. REFER TO FACTORY FOR SPECIAL FEATURES

TRANSFORMER TESTS PER ANSI C57.12.90

TRANSFORMERS CONFORM TO NEMA & ANSI STANDARDS WHERE APPLICABLE.

**STANDARD ACCESSORIES**

1. RADIATORS (FLEXOPLATE) (AS REQUIRED)
2. WELDED ON COVER
3. BOLTED ON INSPECTION PLATE
4. TWO EACH COVER MOUNTED HIGH VOLTAGE BUSHINGS WITH MECHANICAL EYEBOLT CONNECTORS
5. FOUR EACH LOW VOLTAGE BUSHINGS WITH 4 OR 6 HOLE SPADE TERMINALS
6. LIFTING HOOKS (4 REQUIRED)
7. AUTOMATIC PRESSURE RELIEF VALVE
8. ONE INCH UPPER FILTER PRESS CONNECTION AND FILLER PLUG
9. EXTERNAL TAPCHANGER HANDLE (WITH PROVISIONS FOR PADLOCKING)
10. DIAGRAMMATIC CORROSION RESISTANT NAMEPLATE
11. ONE INCH DRAIN PLUG
12. TANK GROUND PAD (1/2" – 13 TAP)
13. TRANSFORMER BASE WITH PROVISIONS FOR ROLLING
14. PROVISION FOR JACKING 1 1/2" MIN., 3 1/2" MAX.
15. PER ASTM D-3487 TYPE II MINERAL OIL FILLED WITH LESS THAN 1 P.P.M. OF P.C.B. AT TIME OF MANUFACTURE
16. BOTTOM OF TRANSFORMER UNDERCOATED TO PREVENT CORROSION
17. PROVISIONS FOR MOUNTING SURGE ARRESTERS
18. PAINT COLOR ANSI – 61 GREY

**TRANSFORMER TESTS PER ANSI C57.12.90**

**TRANSFORMERS CONFORM TO NEMA & ANSI STANDARDS WHERE APPLICABLE**

**TRANSFORMERS SUPPLIED WITH STANDARD DISTRIBUTION ACCESSORIES PER ANSI C57.12.  
REFER TO FACTORY FOR SPECIAL FEATURES.**